

IMAGINE.
PERSONALISE.
CREATE.



IN-STORE AND ON-SITE PRODUCT PERSONALISATION SOFTWARE

With cotodesign software, retailers can offer their customers a unique in-store experience, driving footfall and increasing margins on their existing product range through on-demand product personalisation. Working in combination with a selection of compact and intuitive Roland devices, cotodesign is ideal for in-store, pop-ups, events and exhibitions. Also used by leading brands for the mass customisation of products such as jewellery, cosmetics packaging and more.

KEY BENEFITS

Intuitive interface enables customers to personalise a wide range of merchandise.

Allows the uploading of photos and images from mobile devices.

Flexible interface design for brand and product alignment.

Easy to use and simple to integrate into retail environments and production workflows.

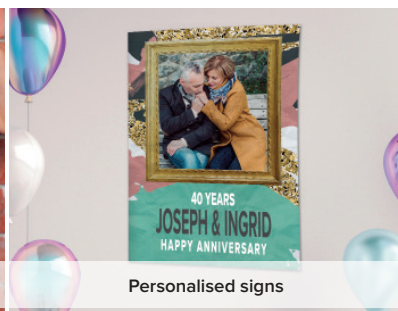
Minimal training required for device operators.



Fashion accessories



Clothing and apparel



Personalised signs

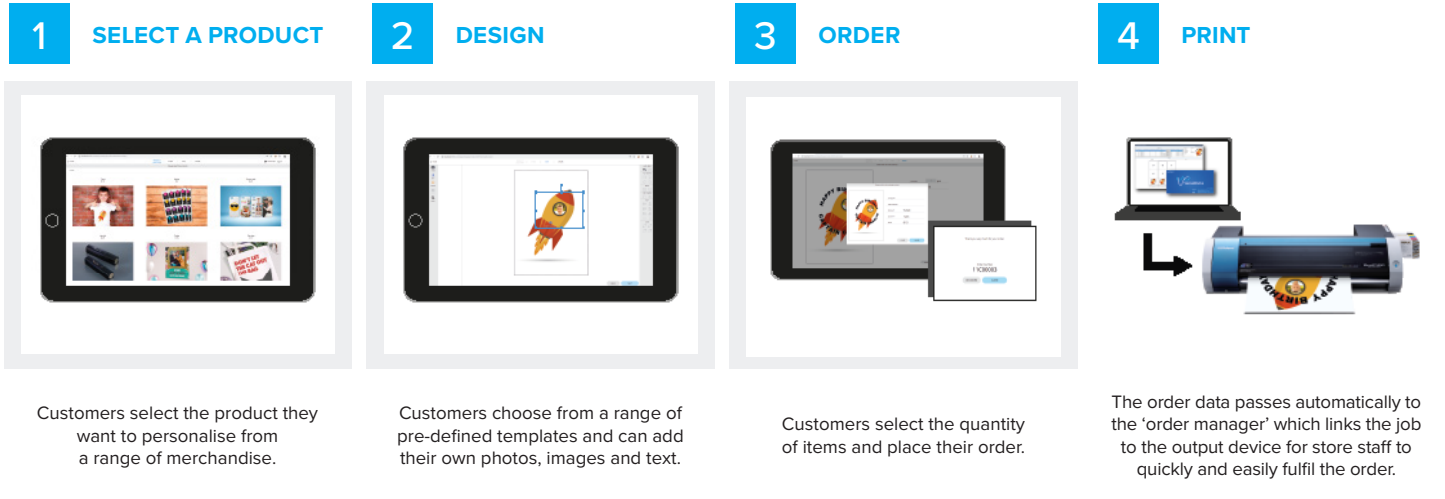


Jewellery and accessories



Product personalisation in 4 easy steps with cotodesign

In just a few minutes customers can take home their unique personalised item



COMPATIBLE WITH A RANGE OF COMPACT, USER-FRIENDLY ROLAND DEVICES

Designed with safety and easy operation in mind, Roland devices feature enclosed working areas, quiet, clean production and certified inks which meet rigorous industry standards. Choose from a range of devices which can be used on their own or as part of an integrated personalisation solution. Backed with comprehensive support for peace of mind. Devices compatible with cotodesign software include:

- VersaUV LEF/LEF2 Series UV-LED Flatbed Printer
- VersaSTUDIO BN-20 Desktop Printer/Cutter

- VersaSTUDIO BT-12 Direct to Garment Printer
- DGSHAPE LD-80 Laser Decorator

- METAZA MPX-90/95 Metal Engraving Machine
- CAMM-1 GS-24 Desktop Cutter

- SF-200 Eco-solvent Flatbed Printer

cotodesign (Server)	
Operating system	Windows 10® 64-bit
CPU	Intel Core i Series or better
Memory	8 GB or more
HD	1 GB or more (for this software only)/ NTFS
Monitor	1920 x 1080 or higher
Web browsers	Google Chrome ver. 67
Drives	DVD-ROM drive
Others	Ethernet port, USB port, Internet connection, Adobe Acrobat Reader, Roland VersaWorks 6.0 and VersaWorks Dual 1.6.11 or later (cotodesign and VersaWorks must be installed on the same computer)

Client Terminals					Supported Devices
Operating system	iOS or later	Android 6.0 or later	Windows 10 64-bit	MacOS 10.13 or later	VersaUV LEF-12/12i/20/200/300, LEF2-200/300, VersaSTUDIO BN-20, BT-12, CAMM-1 GS-24, METAZA MPX-90/95, SF-200, DGSHAPE LD-80
Web browsers (tested)	Google Chrome ver. 67	Google Chrome ver. 67	Google Chrome ver. 67	Google Chrome ver. 67	
Display	1280 x 720 or higher	1280 x 720 or higher	1920 x 1080 or higher	1920 x 1080 or higher	
Others	Able to connect to the Server PC over network				

Specifications, designs and dimensions listed may be subject to change without notice.

Roland DG reserves the right to make changes in specifications, materials or accessories without notice. Your actual output may vary. For optimum output quality, periodic maintenance to critical components may be required. Please contact your Roland DG dealer for details. No guarantee or warranty is implied other than expressly stated. Roland DG shall not be liable for any incidental or consequential damages, whether foreseeable or not, caused by defects in such products. Reproduction or use of copyrighted material is governed by local, national, and international laws. Customers are responsible for observing all applicable laws and are liable for any infringement. Roland DG Corporation has licensed the MMP technology from the TPL Group.